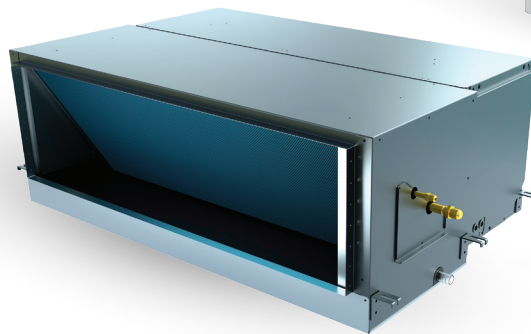
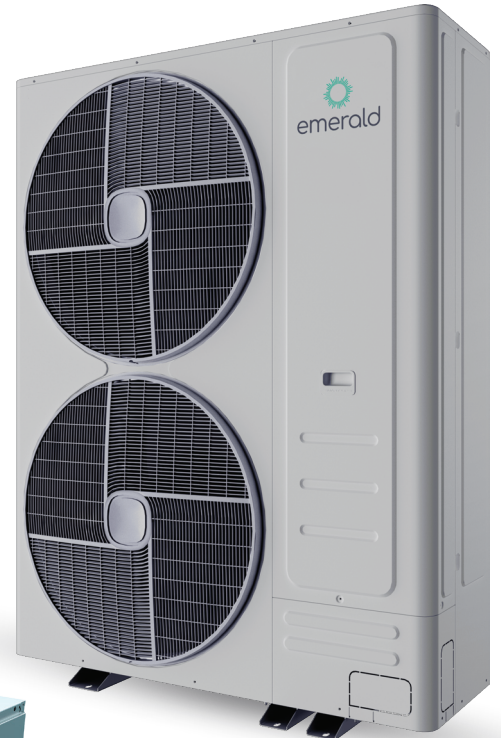


Air Conditioning

Ducted Ultra 20kW

Here's what you need to know to begin installing the Emerald Air Conditioning Ducted Ultra 20kW.

Designed to deliver outstanding performance in both residential homes and small commercial buildings, this system offers versatile climate control solutions. Follow this guide for a smooth and efficient installation process, ensuring optimal operation and comfort.



Model	Heating	Cooling	Dimensions (LxWxH)	Weight
Outdoor ACV200U	26.0kW	20.0kW	440x1250x1650	165kg
Indoor ACV200D	26.0kW	20.0kW	890x1300x470	84.5kg

House sizing guide

Model: outdoor unit	Minimum room area (m ²)	Maximum room area (m ²)
ACV200U	100	240

This product uses VRF technology, which enhances efficiency and control, enabling the system to operate effectively at lower capacities. For optimal performance and longevity, Emerald recommends installing this product in houses larger than 100 square meters.

Air Conditioning

Ducted Ultra 20kW

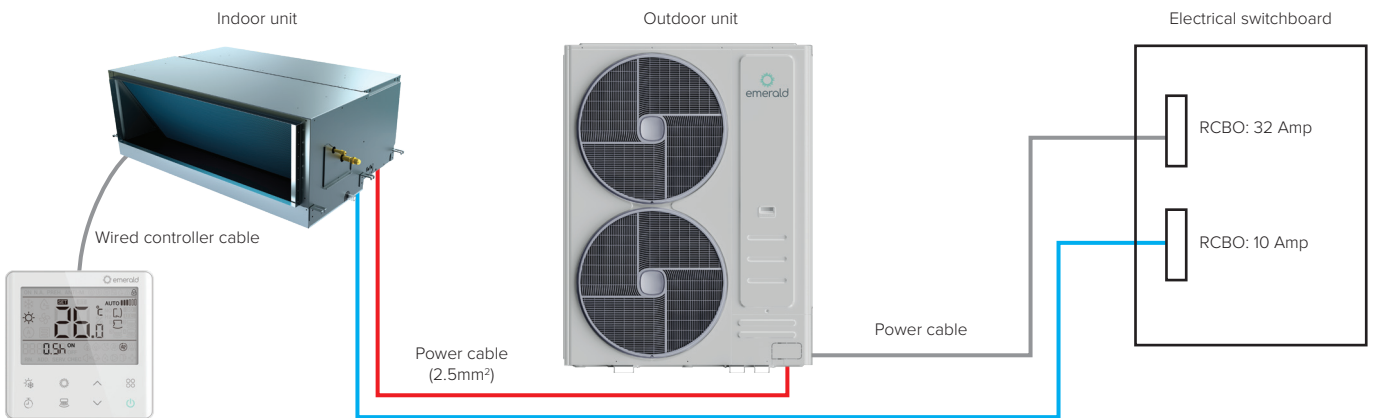
Electrical installation

Isolators and cables

Wired controller cable	0.75mm ² 2 core shielded twisted pair
Outdoor unit rated current	22.74 A
Outdoor unit breaker size	32 A
Outdoor unit power cable	Site dependent

Indoor unit rated current	5.24 A
Indoor unit breaker size	10 A
Indoor unit to indoor unit cable	2.5mm ² (power)

NOTE: Cable and breaker sizes are site dependent. Final sizing and installation must be carried out by a qualified electrician in accordance with AS/NZS 3000 Wiring Rules.



Refrigerant piping installation

Required

- Vacuum process
- Refrigerated handling license

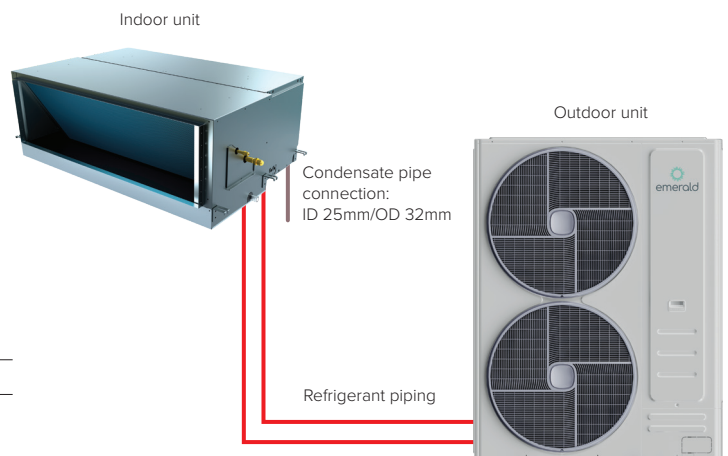
Recommended

- Nitrogen test

Piping connection sizes

Liquid line	Ø9.53mm (3/8 Inch)
Gas line	Ø19.05mm (3/4 Inch)

All piping connections are flare connections, no welding or brazing required.



Ducting installation

Split design for ease of installation into the ceiling

Duct transformation sizes.

Return Air	420x1081mm
Supply Air	390x1215mm

