

# LED Shoplight

## HP Eclipse Shoplight Series with Sensor



The High Performance (HP) Eclipse Shoplight sets the benchmark in energy-efficiency and offers a range of cut-out sizes and wattages, ideal for installation in commercial settings .

With convenient switchable tri-colour temperature technology, the HP Eclipse Shoplight gives you the flexibility to match existing lighting colours and provide your customers with additional options.

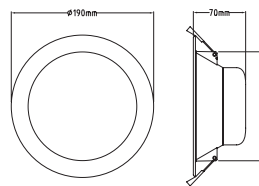
The built in dual motion & lux sensor is easily controlled by the Emerald Universal Remote Control (sold separately).The handheld remote switches the sensor on & off and adjustshold time, stand by periods and stand by dimming levels.

### Features

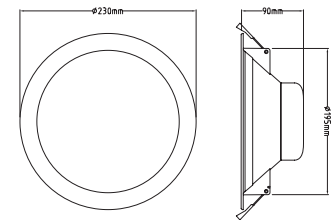
- Motion and daylight sensor.
- Range of wattage and size options.
- IP40 rating.
- Switchable tri-colour (3000K, 4000K and 5000K)
- 1m flex and plug.



Remote control EP-UNIV-R



EP-HP-TDS150-8 & 13



EP-HP-TDS200-8 & 13

### Specifications

Power factor	>0.9	Model	CCT	Dimensions (mm)	Cut Out	LCP	Watt	Lumens	Efficacy (lm/W)
CRI	>80	EP-HP-TDS150-8	3/4/5000K	ø190xH70mm	70mm	7.9	8	985	125
Beam angle	100°	EP-HP-TDS150-13	3/4/5000K	ø190xH70mm	70mm	12.97	13	2045	158
Dimmable	Yes	EP-HP-TDS200-8	3/4/5000K	ø230xH90mm	90mm	7.98	8	1091	137
IP Rating	40	EP-HP-TDS200-13	3/4/5000K	ø230xH90mm	90mm	12.97	13	1932	149
Lifetime (L70)	>60,000hrs								
Warranty	5 years								

