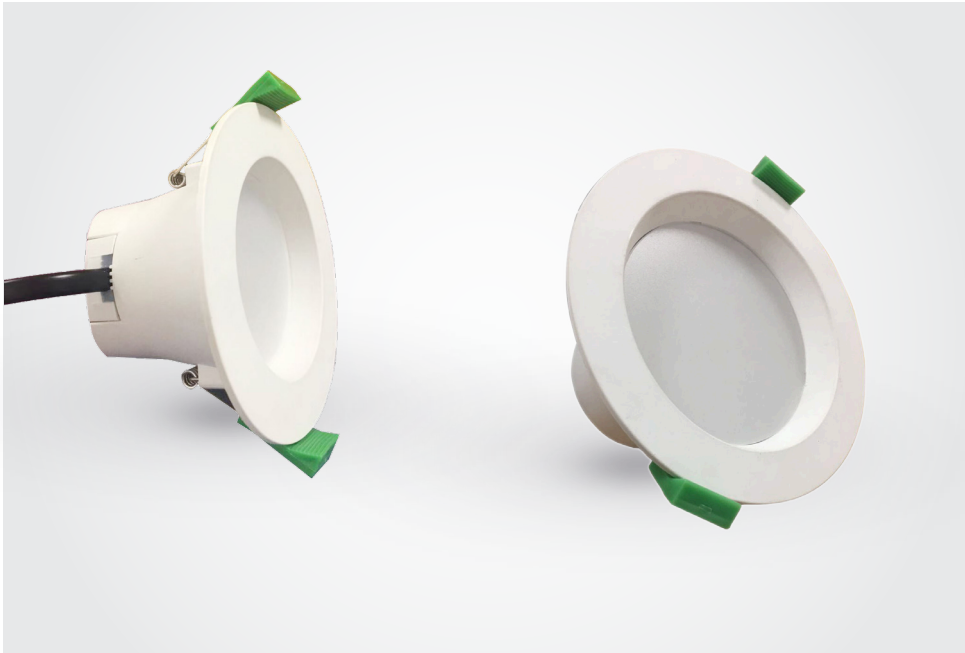


LIGHTING

LED DOWNLIGHT



HP ECLIPSE DOWNLIGHT SERIES

The High Performance (HP) G2 Eclipse Downlight sets the benchmark in energy-efficiency and offers a range of cut-out sizes and wattages, ideal for installation in commercial settings .

With convenient switchable tri-colour temperature technology, the HP G2 Eclipse Downlight gives you the flexibility to match existing lighting colours and provide your customers with additional options.

FEATURES

- Switchable tri-colour (3000K, 4000K and 5000K)
- Range of wattage and size options
- IC-4 Rated
- 60 cm flex and plug cable

SPECIFICATIONS

POWER FACTOR	>0.9
CRI	>80
BEAM ANGLE	90°
DIMMABLE	Yes
IP RATING	40
LIFETIME (L ₇₀)	>54,000hrs
WARRANTY	5 Years

MODEL NUMBER	CCT	DIMENSIONS	CUT OUT	WATT	LCP	LUMENS	EFFICACY
EP-HPG2-TD70-5	3/4/5000K	ø95x H67.6mm	70mm	5	5	500	100lm/W
EP-HPG2-TD70-8	3/4/5000K	ø95x H67.6mm	70mm	8	8	800	100lm/W
EP-HPG2-TD90-5	3/4/5000K	ø115x H71.6mm	90mm	5	5	500	100lm/W
EP-HPG2-TD90-8	3/4/5000K	ø115x H71.6mm	90mm	8	8	800	100lm/W

