

## Emerald Planet LED Downlight Instructions

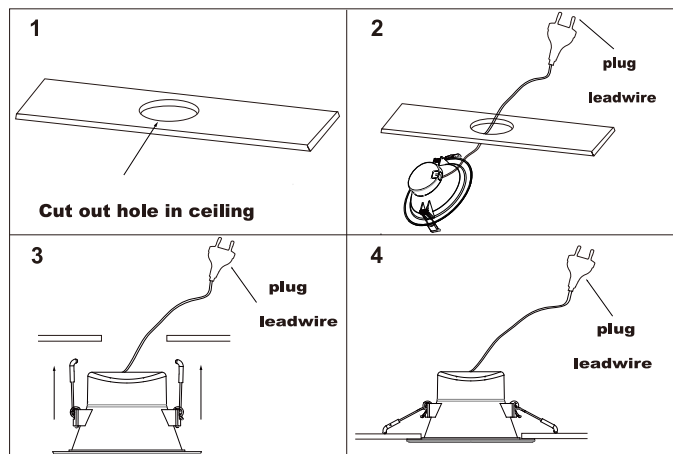
**WARNING:**

- Must be installed by a licensed electrician (except if simply plugged into an existing Surface Socket or Mains Power Outlet).
- IP44, for indoor use only.
- Ensure mains power supply of the fixture is switched off before installation.
- Ambient temperature: -10°C-40°C

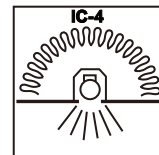
**Description:**

Model	Rating	Cut-out
EP-HPG2-TD70-5	5W, 220-240V, 3000K, 4000K, 5000K, IP44	70mm
EP-HPG2-TD70-8	8W, 220-240V, 3000K, 4000K, 5000K, IP44	70mm
EP-HPG2-TD90-5	5W, 220-240V, 3000K, 4000K, 5000K, IP44	90mm
EP-HPG2-TD90-8	8W, 220-240V, 3000K, 4000K, 5000K, IP44	90mm
EP-HPG2-TD150-10	10W, 220-240V, 3000K, 4000K, 5000K, IP44	150mm
EP-HPG2-TD150-20	20W, 220-240V, 3000K, 4000K, 5000K, IP44	150mm
EP-HPG2-TD200-10	10W, 220-240V, 3000K, 4000K, 5000K, IP44	200mm
EP-HPG2-TD200-20	20W, 220-240V, 3000K, 4000K, 5000K, IP44	200mm

**Installation Instruction:**



**RISK OF FIRE- REQUIRED CLEARANCE FROM STRUCTURAL MEMBERS AND BUILDING ELEMENTS**  
 SCI = 75 mm    MIC = 0 mm    SCB = 0 mm    HCB = 0 mm



**CAUTION, RISK OF ELECTRIC SHOCK**

The light source contained in this luminaire can only be replaced by the manufacturer or his service agent or a similar qualified person.

