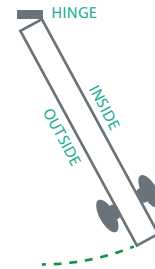


# Emerald door seal

## Installation Guide

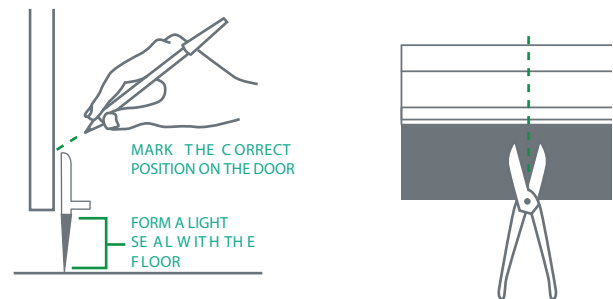
### 1) Assessment

- Choose the most appropriate colour seal (white/grey or brown/brown).
- Determine whether the seal should be attached to the inside or outside of the door. If it works equally well on either choose the inside of the door.



### 2) Measurement

- Before removing the adhesive backing, determine the correct position of the door seal.
- Mark the correct position on the door (The flexible strip should form a light seal with the floor when closed and move smoothly across the floor when the door is opening/closing.)
- Cut the door seal to the required length using hand shears (i.e. Tin Snips or Garden Secateurs/Pruning Shears).



### 3) Surface Preparation

- Ensure the surface of the door where the door seal will be affixed is dry, smooth, clean and if painted, well cured.
- If cleaning is required, ensure all cleaning products are wiped from the surface before installation.



### 4) Application

- With the door in a closed position, remove the adhesive backing and affix the door seal to the marked position on the door and press firmly.
- Best results are achieved when adhesion temperature is at least 20°C. If possible, allow to cure fully before opening the door. Full adhesion strength may take a few days.

